

## Miss Wurzer's Second Grade Learning Survey

What is a learning preference inventory?

A learning preference inventory is a questionnaire or survey that determines which type of learning style each person has. Everybody learns material best in different ways. Everyone utilizes their senses in different ways and amounts when learning.

Why is this important for **you**?

It is important for everyone to know what learning style they learn best with to help them be successful in school and in life. Once a student knows how they learn best, they can study and learn in those ways. This helps people to learn in the best way for them.

Why is this important for Miss Wurzer?

Knowing your learning style is important for me so I can teach lessons and do activities that can help you learn in the best way for you, and for all of the students in the classroom. I want us all to be the most successful and effective learners that we can be.

Directions for Learning Style Inventory

\*Parents please help your students in completing these tasks

Type this link into an internet browser (Google Chrome, Internet Explorer, Firefox, etc.):

<http://www.educationplanner.org/students/self-assessments/learning-styles-quiz.shtml>

Help your child complete the twenty question survey that is on the website. Please pick the answer to the questions that most apply to you (the student taking the survey). Press the red arrow on the right bottom area of the screen to move on to the next question. After the twentieth question is completed, press the red arrow once more to get the results. The results of your learning style will appear on the screen. Take time to read about your learning style. Then fill out the worksheet about your learning style that is attached.

## \*Miss Wurzer's Second Grade Learning Survey\*

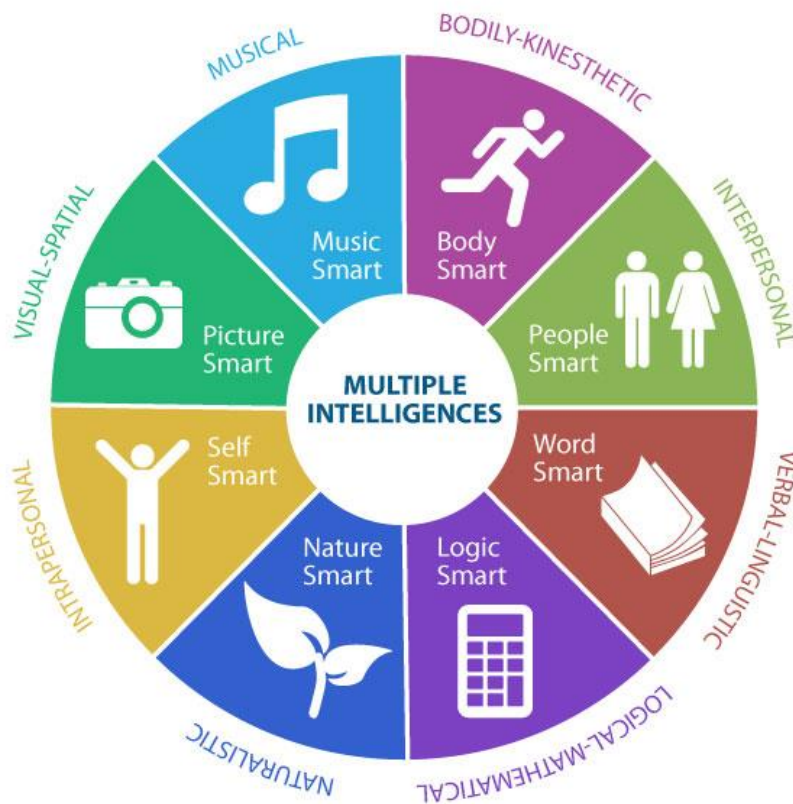
### Directions for Multiple Intelligence Test

\*Parents please help your students in completing these tasks

Type this link into an internet browser (Google Chrome, Internet Explorer, Firefox, etc.):

<https://www.edutopia.org/multiple-intelligences-assessment>

The student taking the test should answer how they feel the option best relates to them, starting with 'not' on the left, three middle options, and 'very' on the right. Press the blue next at the bottom after completing the questions. Once you finish the last questions, press the blue 'finish' button at the bottom. This will take you to the results of the test. Your results are shown in percentages, the greater the percentage, the more of that intelligence you have. Record your top three intelligences on the attached worksheet along with their corresponding percentages. Then click on your top intelligence (the word next to the graph and percentage) and read the information provided. On the attached worksheet, write down two facts that you learned about this intelligence and draw a picture showing one way you feel that you use this intelligence (Ex. Linguistic- telling a story).



# \*Miss Wurzer's Second Grade Learning Survey\*

## Learning Style Inventory Worksheet

Name: \_\_\_\_\_

Your Scores:

Auditory: \_\_\_\_\_%

Visual: \_\_\_\_\_%

Tactile: \_\_\_\_\_%

Which learning style is your highest score? \_\_\_\_\_

3 facts about your top learning style:

1) \_\_\_\_\_  
\_\_\_\_\_

2) \_\_\_\_\_  
\_\_\_\_\_

3) \_\_\_\_\_  
\_\_\_\_\_

1 way you think this could help you learn better:

\_\_\_\_\_

\_\_\_\_\_

\_\_\_\_\_

# \*Miss Wurzer's Second Grade Learning Survey\*

## Multiple Intelligences Test Work Sheet

Name \_\_\_\_\_

Your top three intelligences:

1) \_\_\_\_\_ %

2) \_\_\_\_\_ %

3) \_\_\_\_\_ %

My highest intelligence is \_\_\_\_\_!

Two facts about this intelligence are:

1) \_\_\_\_\_

\_\_\_\_\_

2) \_\_\_\_\_

\_\_\_\_\_

Draw a picture showing one way that you could use this intelligence:

## Works Cited

N.A., Multiple Intelligences Self-Assessment. (n.d.). Retrieved March 13, 2017, from <https://www.edutopia.org/multiple-intelligences-assessment>

N.A., What's Your Learning Style? 20 Questions. (n.d.). Retrieved March 13, 2017, from <http://www.educationplanner.org/students/self-assessments/learning-styles-quiz.shtml>

Santrock, J. W. (2012). *Educational psychology* (5th ed.). Boston: McGraw-Hill.

[Reply](#)

Southey, E. (n.d.). Multiple Intelligence Theory: Is it real? Retrieved March 11, 2017, from <https://gradeslam.org/blog/multiple-intelligence-theory-is-it-real>